

TECHNICAL & HOSPITALITY RIDER

Table of contents

[KADRI VOORAND \(vocals / piano / guitar\)](#)

[MIHKEL MÄLGAND \(double bass\)](#)

[STAGE PLOT](#)

[INPUT LIST](#)

[OUTPUT LIST](#)

[MIXING CONSOLE & PA](#)

[SOUNDCHECK](#)

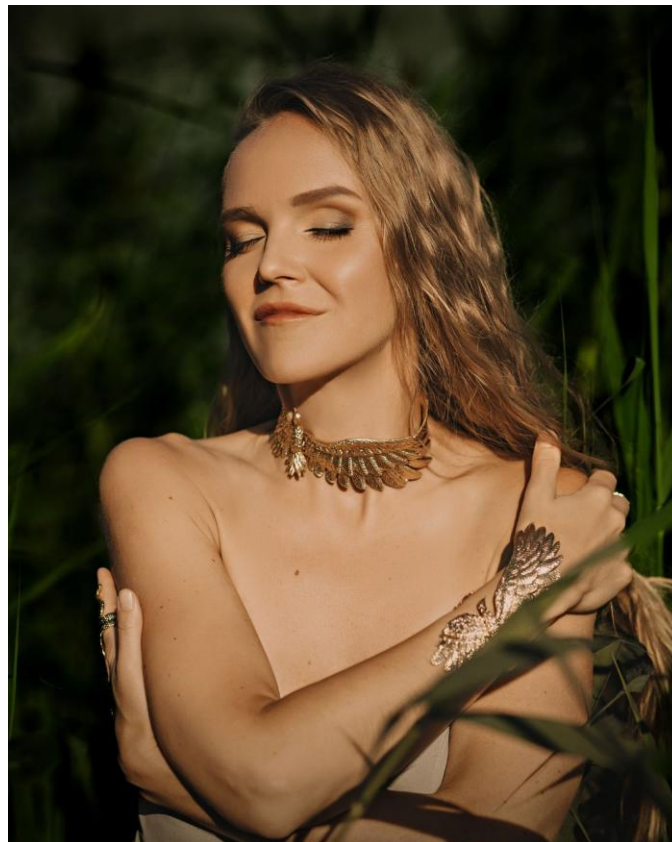
[LIGHTING](#)

[HOTEL](#)

[TRANSPORT](#)

[HOSPITALITY](#)

[CONTACT](#)



KADRI VOORAND (vocals / piano / guitar)

5 inputs / 2 outputs

- 2 microphones for vocals (Neumann KMS 105) – *own mics*
- 2 microphone stands (with boom)
- Tuned grand piano in good technical condition
- 2 microphones for piano (Neumann MCM 114) – *own mics*
- Acoustic guitar (cutaway model) with piezo and stand
- Piano chair (adjustable)
- Percussion table with adjustable height 60×40 cm (or 70×40 cm)
 - NB: Height must match the bottom edge of the piano



- Wireless in-ear monitor system (Sennheiser or Shure) – *own headphones*
- 5 power sockets
- 2 bottles of still and sparkling water on stage

MIHKEL MÄLGAND (double bass)

5 inputs / 1 output

- 1 bass amp
 - Preferred: Aguilar, Acoustic Image, AER, Markbass, Marcacoustic (or other professional amp)
- 1 monitor (wedge)
- 1 microphone for voice
- 1 music stand with boom
- 4 power sockets
- Acoustic bass stand
- Stereo DI-box with link (6.3 mm jack option)
- Professional double bass in good condition:
 - Preferred size: $\frac{3}{4}$
 - Preferred strings: Thomastik Spirocore, Pirastro Obligato or Evah Pirazzi
 - Mensure: D-neck
 - Adjustable bridge



intl. booking agency – label – artist management - labelmanagement – distribution service – publishing

o-tone music

inhaber: uwe hager m.a.

marktlaubenstr. 1

35390 gießen, germany

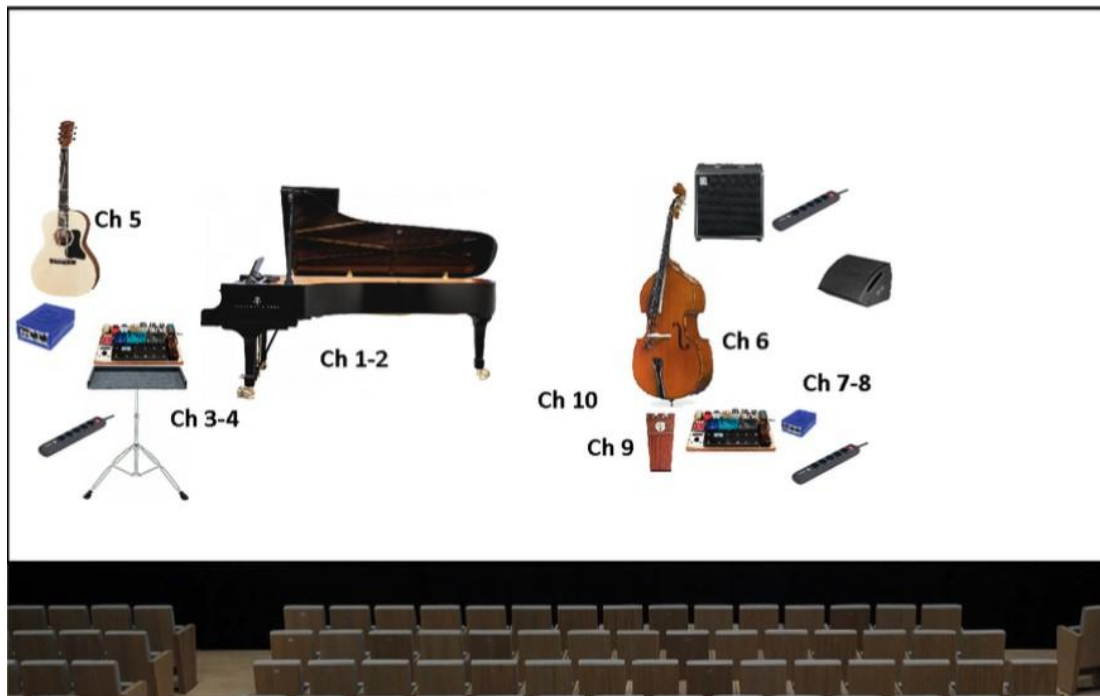
fon u. +49 (0)641. 94889-30/ -32 /-31

e-mail: info@o-tonemusic.de

www.o-tonemusic.eu

- Preferred pickups: Fishman Full Circle, Bassbalsereit, Wilson, Realist
- French bow
- 2 bottles of still and sparkling water on stage
- Two small towels

STAGE PLOT



INPUT LIST

#	Source / Instrument	Mic / DI / Cable Needed	Mic provided by
1	Piano L	Neumann MCM 114 + XLR	Artist
2	Piano R	Neumann MCM 114 + XLR	Artist
3	Kadri Vocal (main)	Neumann KMS 105 + stand + XLR	Artist
4	Kadri Vocal (fx/loop)	Neumann KMS 105 + stand + 2× XLR	Artist
5	Kadri Acoustic Guitar	DI-box + jack instrument cable + stand + XLR	-
6	Double Bass (mic)	Mic + XLR	Artist
7/8	Double Bass (stereo DI)	Active stereo DI (with link out) + 2× XLR	-
9	Stomp box	XLR	-
10	Mihkel Vocal	Mic + stand + XLR	Venue



OUTPUT LIST

Output	Artist	Type	Notes
1/2	Kadri Voorand	Stereo wireless in-ear	Wireless system provided by venue Headphones artist's own
3	Mihkel Mälgand	Wedge monitor	Provided by venue

MIXING CONSOLE & PA

- Professional full-range PA system appropriate for venue size and audience capacity, with adequate subwoofers for bass instruments
- Own rack mixer (placed on stage) + small controller to FOH
- Cat5e or Cat6 cable required from stage to FOH
- XLR cables required for connection

Important: Kadri's sound engineer must be in direct contact with the sound provider and house technicians.

Please send sound system specifications directly to:

Ilmar Madison – ilmar@ehastkoiduni.ee – +372 511 1435

SOUNDCHECK

- Minimum 90 minutes required before concert

LIGHTING

- Warm colours
- Smooth transitions

HOTEL

Promoter books and pays for **3 single rooms**, preferably 4- or 5-star hotel with:

- 24-hour reception
- Toilet and shower in the rooms
- Breakfast and Wi-Fi included or prepaid



intl. booking agency – label – artist management - labelmanagement – distribution service – publishing

o-tone music

inhaber: uwe hager m.a.
marktlaubenstr. 1
35390 gießen, germany
fon u. +49 (0)641. 94889-30/ -32 /-31
e-mail: info@o-tonemusic.de
www.o-tonemusic.eu

TRANSPORT

Promoter organises and pays for:

- Travels from Tallinn, Estonia
- Local transportation (airport / train station / venue / hotel)

⚠ Please note: the group's technical equipment takes extra space.

HOSPITALITY

On Stage

- Kadri: 2 small bottles still & sparkling water
- Mihkel: 2 small bottles still & sparkling water
- 2 small towels (Mihkel)

Backstage

- Changing room with mirror, electricity, toilet
- 3 bottles of still & sparkling water
- Coffee, tea, light snack (vegetarian option preferred)
- One bottle of wine (e.g. Riesling or Pinot Noir)
- Internet/Wi-Fi appreciated (please inform manager if password is needed)

CONTACT

✉ team@kadrivoorand.com

☎ **+372 5665 3977**

🌐 www.kadrivoorand.com