



o-tone
music

o-tone music

intl. booking agency – label - labelmanagement – distribution service – publishing – b2b

inhaber: uwe hager m.a.
marktlaubenstr. 1
35390 gießen
germany

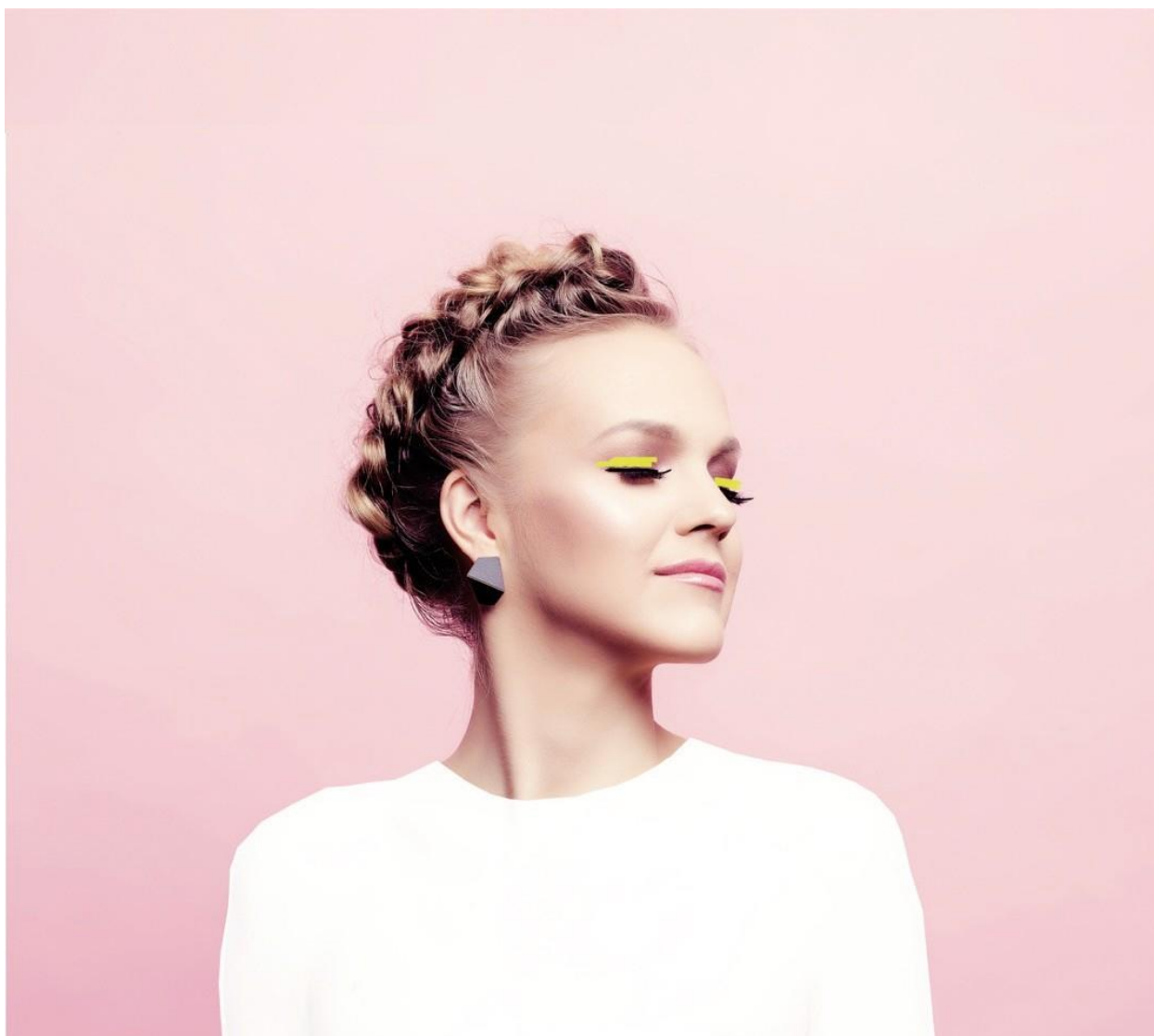
fon u. +49 (0)641. 94889-30/ -32 /-31

e-mail: info@o-tonemusic.de

www.o-tonemusic.eu

RIDER

KADRI VOORAND IN DUO WITH MIHKEL MÄLGAND





KADRI VOORAND (vocals/piano): 6 inputs 2 outputs

- 2 microphones (Neumann kms 105) **NB:own mics**
- 4 microphone stands (with boom)
- Tuned grand piano in good technical condition
- 2 microphones for piano (DPA, NEUMANN, SCHOEPS, SENNHEISER)
- piano chair (adjustable)
- percussion table with adjustable height **60cm x 40cm** (or 70cm x 40cm)
NB: The height of the table must be the same height as the piano keys,



- Wireless in-ear monitor system, Sennheiser or Shure models (own headphones)
- 5 power sockets
- 2 bottles of still and sparkling water on stage

MIHKEL MÄLGAND (double bass): 3 inputs 1 outputs

- 1 bass amp
 - Preferred Amps: Gallien & Kureger, Aquilar, Acoustic Image, AER, Markbass Marcacoustic or other professional amp
- 1 monitor (wedge)
- 1 microphone for voice
- 1 music stand with boom
- 4 power sockets
- music stand
- **Professional double bass in good technical condition:**
 - Preferred size $\frac{3}{4}$
 - Preferred strings: Thomastik – Spirocore, Pirastro – Obligato or Evah Pirazzi
 - Mensure: D-neck
 - Adjustable bridge
 - Preferred pickups: Fishman Full Circle, Bassbalsereit, Wilson, Realist
 - French bow
- 2 bottles of still and sparkling water on stage
- two small towels



Kadri Voorand travels with her own sound engineer.

Mixing console:

- Using own rack mixer (placed in stage)
- 1 Cat5e or cat6 or cat7 cable from stage to FOH
- Need xlr cables for connection

Note!

The sound engineer needs to be in direct contact with the sound provider and house technicians. Please send sound system specifications directly to:

Ilmar Madison

ilmar@ehastkoiduni.ee

+3725111435

For soundcheck is needed at least 1.5 hours.

Stage plot is added below

Lighting: warm colors, smooth transitions.

Hotel

The Promoter books and pays for accommodation (3 single rooms), preferably 4 or 5-star hotel with 24 hour reception. Internet, toilet and shower in the rooms and with breakfast and wifi included or prepaid for us.

Transport

The Promoter organizes and pays for travels from Tallinn, Estonia as well as local transportation from and to the airport/train-station/venue/hotel. Please note that the group's technical equipment takes extra space.

Backstage

- Changing room with mirror, electricity and toilet
- 3 bottles of sparkling and still water
- Coffee, tea, little snack (vegetarian)
- One bottle of wine (for example Riesling or Pinot Noir)
- Internet or wifi is greatly appreciated (please inform the manager if password is needed)



o-tone
music

intl. booking agency – label - labelmanagement – distribution service – publishing – b2b

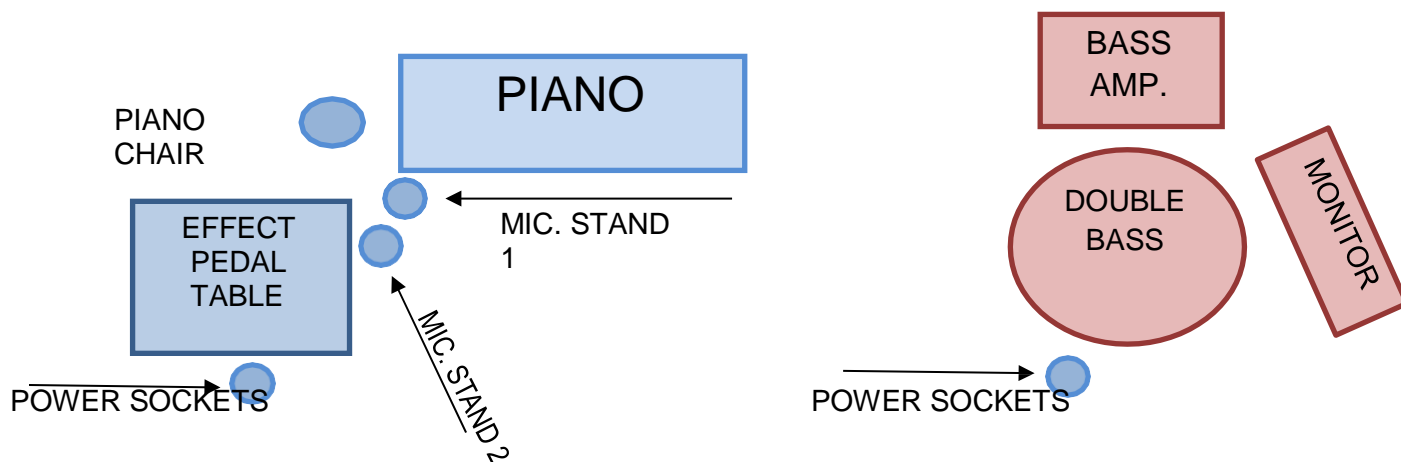
o-tone music

inhaber: uwe hager m.a.
marktlaubenstr. 1
35390 gießen
germany

fon u. +49 (0)641. 94889-30/ -32 /-31
e-mail: info@o-tonemusic.de
www.o-tonemusic.eu



STAGE PLOT

STAGE



FRONT

LEGEND:

-  - Kadri Voorand (vocal/piano)
-  - Mihkel Mälgand (bass)